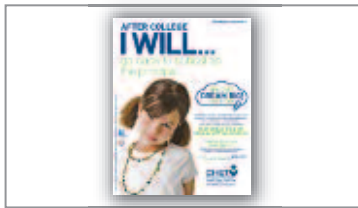




# Promotion/Entry Materials Order Form

Spread the word and help Connecticut students grades K-5 enter the CHET Dream Big! Competition by ordering these free promotion and entry materials.



## Official Registration/Entry Form

Entry form allows Connecticut K-5 students to enter the Competition and informs parents and guardians of rules

- Everything needed to learn about and enter the Competition

QUANTITIES REQUESTED:



## Buck Slip

Small 8" x 4.5" marketing piece describes the CHET Dream Big! Competition

- Perfect for direct mailings or to hand out at events

QUANTITIES REQUESTED:



## Posters

Two double-sided 12" x 18" posters feature different messages on each side

- Hang up to promote the Competition to children and parents

QUANTITIES REQUESTED:



## Brochure

Pocket-sized brochure provides an overview of the CHET direct-sold 529 college savings plan

- Parents return the postage-paid reply card to learn more about CHET's direct-sold college savings plan

QUANTITIES REQUESTED:



## Website, Banner Ads & Emails

CHET will also be promoting the Dream Big! Competition to families and teachers with a website, banner ads and emails. Please contact us if you are interested in learning more about these materials.

## Primary Contact Information

Name \_\_\_\_\_ Title \_\_\_\_\_  
 School/Organization \_\_\_\_\_  
 Shipping Address \_\_\_\_\_  
 Phone \_\_\_\_\_ Alt. Phone \_\_\_\_\_  
 Email \_\_\_\_\_  
 Additional Questions/Requests \_\_\_\_\_

## MAIL OR FAX FORM TO:

CHET Dream Big! Competition  
 P.O. Box 271455  
 West Hartford, CT 06127-1455  
  
 Phone: (860) 305-4605  
 Fax: (860) 676-1940  
 Email: [admin@chetedreambig.com](mailto:admin@chetedreambig.com)

Deadline for postmarked entries:  
**APRIL 4, 2011.**

Entries must be received no later than April 9, 2011.

Please turn over for additional important information.

VOID WHERE PROHIBITED. NO PURCHASE NECESSARY TO ENTER OR WIN.

Sponsored by the State of Connecticut Treasurer's Office, TIAA-CREF Tuition Financing, Inc., Program Manager and the Connecticut Higher Education Trust (CHET) direct-sold 529 college savings plan. For more details and official rules and prize descriptions, please visit [www.chetedreambig.com](http://www.chetedreambig.com).

***Consider the investment objectives, risks, charges and expenses before investing in the Connecticut Higher Education Trust (CHET). Please visit [www.aboutchet.com](http://www.aboutchet.com) for a Disclosure Booklet containing this information and other information. Read it carefully.***

***Before investing in a CHET direct-sold 529 college savings plan, you should consider whether the state you or your designated beneficiary reside in or have taxable income in has a 529 plan that offers favorable state income tax or other benefits that are only available if you invest in the state's 529 plan.***

***Account value in the Investment Options is not guaranteed and will fluctuate based upon a number of factors, including general market conditions.***

The CHET direct-sold plan is managed by TIAA-CREF Tuition Financing, Inc. CHET is administered by the Connecticut State Treasurer's Office.